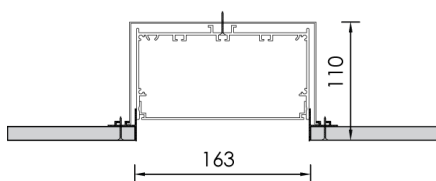
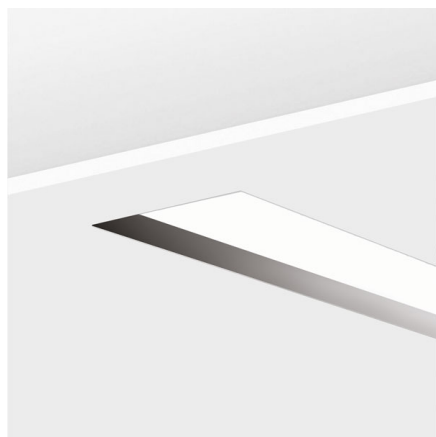


NOTUS 2 TRIMLESS B LINEAR LED



TECHNICAL DETAILS

Housing :	Extruded aluminium
Diffuser :	Extruded PMMA Cross
Control Gear :	Built-in electronic driver
Transmittance :	70%
IP :	40
IK :	04
	• LED replacement with tools

Colors



-10
White



-20
Black



-90
Anoxal matt

Accessories



CONVERSION
KIT+BATTERY

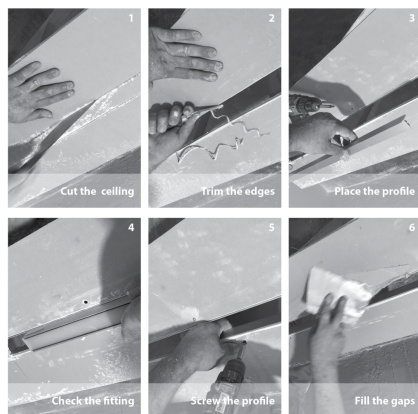
Lighting Sources

**2x Linear LED | CRI80**

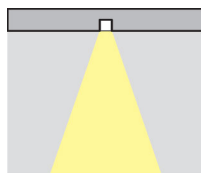
3000K / 4000K | 3step MacAdam | Ripple < 3% | Lifetime>50.000h | LM80 test report

For more info please see below at Linear LED PDF

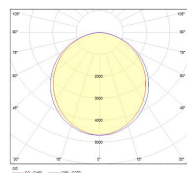
L max: 4500mm



Lighting



Photometric



Headoffice - Showroom: 13 Sofokli Venizelou Ave., Likovrisi, P.O. Box 14123, Athens, Greece. Tel: +30 210 28 51 304 Fax: +30 210 28 51 306

Factory - Financial Services: 5 Kefalovrisou Str., Monomati, Aharnai, P.O. Box 13677 Athens, Greece. Tel: +30 210 62 08 230 Fax: +30 210 62 08 262

website: www.bright.gr | **e-mail:** info@bright.gr